The background is a light gray wall with a white brick pattern. Scattered around the text are various hand-drawn doodles in different colors: a green oval at the top left, a yellow circle with a grid at the top right, a blue scribble at the top right, a yellow semi-circle on the left, a blue scribble on the left, a green outline of a book on the right, a yellow dashed line at the bottom right, a red zigzag at the bottom right, a yellow squiggle at the bottom center, a green scribble at the bottom left, and a blue scribble at the bottom left.

Pre-Primary & Primary Education

Education in Grenada

Pre-Primary

Pre-primary education falls under the government's responsibility. Although over 90% of young children attend pre-primary education, it is not compulsory in Grenada and is available to children aged 3 to 5.



Primary Education

Primary education lasts for a total of 6 years. Children enter Kindergarten at the age of 5

Assessments in Primary Education:

- Minimum Competency Testing: Grades 2, 4 & 5
- Caribbean Primary Exit Assessment (CPEA) Grade 6



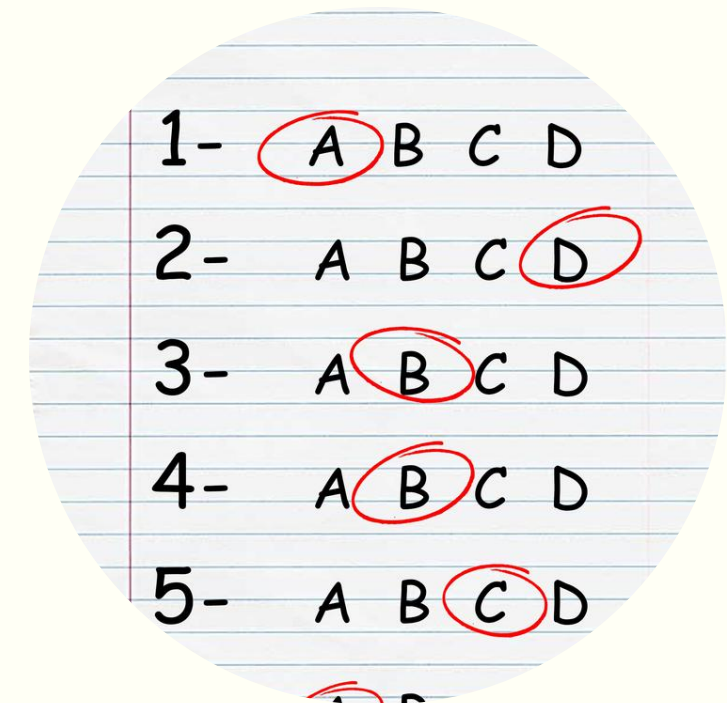
The CPEA



Established by the Caribbean Examinations Council (CXC) in partnership with the Ministry of Education to assess students' performances throughout grades 5 and 6



The exam is open to students who are between 11 and 14 years old.



The CPEA comprises an internal and external component



The internal component assessment are conducted in: social studies, language arts, mathematics and science.



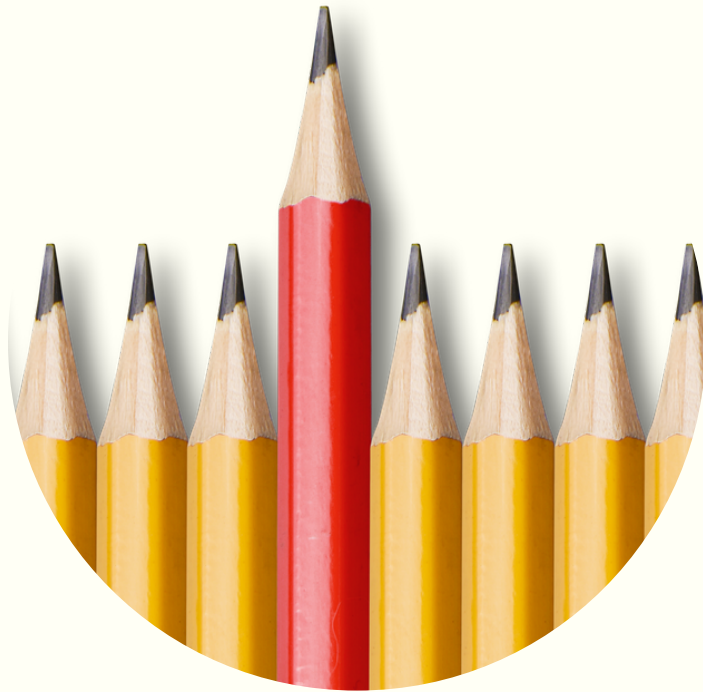
The external component includes multiple choice questions on the same subjects

Range %	Interpretation	Recommendation
80 – 100	Mastery	Provide challenging opportunities
70 – 79	Very Good	Provide enrichment opportunities
60 – 69	Good	Provide enrichment opportunities
50 – 59	Average	Reinforcement needed
40 – 49	Unsatisfactory	Re-teaching necessary
30 – 39	Weak	Re-teaching necessary
Less than 30	Extremely Poor	Special Education Needed

Range of scores & interpretation for the Minimum Competency Testing



Special Education



3 centres cater for students with cognitive impairments one of which also caters for students with multiple challenges. All 3 schools are adequately positioned on the island for easy access.



Only students who are profoundly hearing-impaired receive education at the School for the Deaf. All other students, including those who are visually impaired, are mainstreamed.



New initiatives to be implemented include early screening & diagnosis as well as teacher training in inclusive strategies as the system moves towards full Inclusive Education.

Get in touch with us

For any questions or comments:

Email

gnaboffice@accreditation.gd



Phone number

1 473 435-1970/440-3204



Website

www.accreditation.gd

